

Great looking emails.



Try It Free  
Constant Contact

Market News

# All 33 floorplans at Bread Company Condos are named after baked goods

Michelle McNally Feb 19, 2020

0 Shares [f](#) [t](#) [e](#) [+](#)



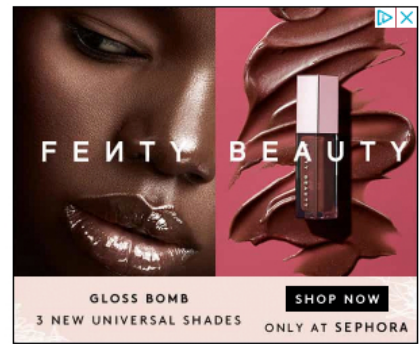
Rendering: BuzzBuzzHome

If your love of carbs has got you seeing bread at every meal, then you're going to loaf these condo floorplan names.

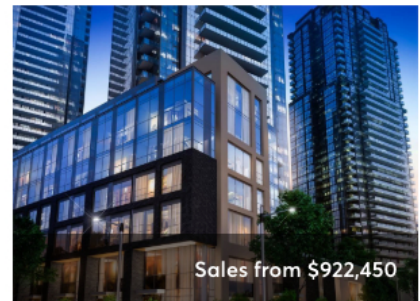
The site of the late and beloved Silverstein's Bakery in Toronto's Baldwin Village is being redeveloped. After nearly a century in business of supplying the city's restaurants, delis and grocery stores with goods, the family-run bakery closed in the summer of 2016.

Upon [purchasing the site](#) for \$23.75 million, Lamb Development Corp. has new plans for the lot — a high-rise condominium tower called [The Bread Company Condos](#).

SEE ALSO: [Canada's tallest condo tower is preparing to launch sales in Toronto](#)



## Featured Homes



Sales from \$922,450

### Nord Towns at Expo City

Vaughan, Ontario

[Official Site](#)



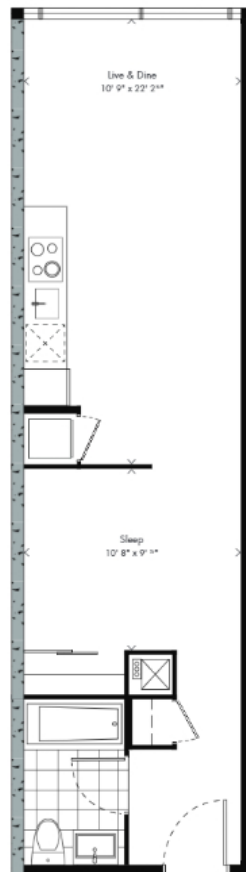
Eleven•11 Clarkson

The Lamb Development marketing team didn't pass up on the opportunity to keep running with the whole bakery theme when it came to naming the floorplans in the project. Naturally, they decided to label the layouts in The Bread Company Condos after, you guessed it, different types of bread and other baked goods.

If you're looking for a one-bedroom unit around the pre-launch mid-\$800's price range, for instance, you might be interested in the Pita or Klosterbrot plans. Prefer a studio around the 515 square-foot mark? No problem — Challah, Cornbread and Brioche have you covered. If you've always wanted to live in a ciabatta bun, or on top of a sweet pan dulce, then the three-bedroom penthouse units might satiate your hunger. Unfortunately, the bread inspiration didn't influence the floorplan design as far as we can tell. The Bagel floorplan isn't a circular room with a hole in the centre, and Cinnamon Roll lacks any spiralization or icing in the layout.

# Brioche JUNIOR ONE BEDROOM

515 SF



- 207
- 307
- 407
- 507
- 607
- 707



Levels 2-7

Windows, balcony and balcony door may differ in size and/or location. Actual floor area may differ from stated floor area. All prices, sizes and specifications are subject to change without notice. © 2018

Please refer to floor plate for balcony orientation and configuration.



# Ciabatta SKY-PENTHOUSE

902 SF

- 2003



Get bigger results for your small business

Constant Contact [Try It Free](#)

## Housing Market News Alerts

Sign up to receive news alerts on the Toronto housing market

## Want to reach our newsdesk?

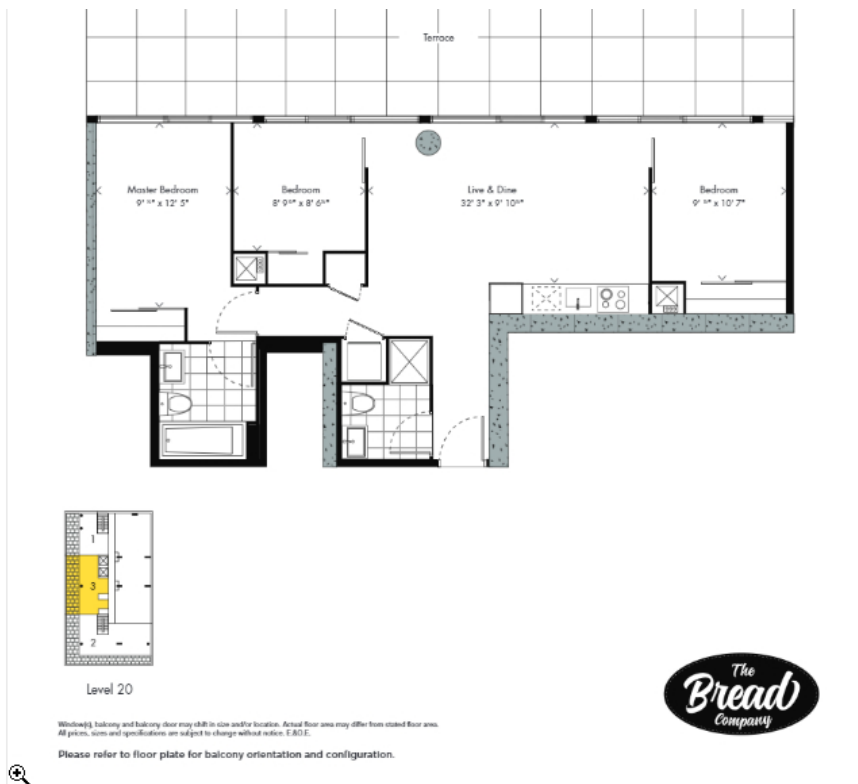
Drop us a line anytime.  
[newsdesk@livabl.com](mailto:newsdesk@livabl.com)

Standout social ads.

Constant Contact [Try It Free](#)

## Most Read

- Warren Buffett's Berkshire Hathaway HomeServices enters Toronto with landmark Blue Elephant deal
- Federal government proposal will boost Toronto house hunters' buying power



Renderings: BuzzBuzzHome

Historically, Lamb Development Corp. and Brad J. Lamb Realty Inc. has appreciated a good pun and displayed some creative flair when naming floorplans. This is the company that [photoshopped Brad J. Lamb's head](#) onto the body of a lamb and posted the image on billboards across Toronto.

There was also the time when Canadian actor William Shatner objected to his name being used as part of the celebrity themed-floor plan collection for Television City Condos. Shatner opposed the [use of his name and likeness](#) to promote a 1,370-square-foot, two-bedroom penthouse floor plan in the Hamilton highrise, developed by Lamb Development and Movengo Corporation. The floorplan collection has since changed to feature non-celebrity labels, and the issue between Shatner and Lamb was [reportedly diffused offline](#) with a proposed donation to Shatner's charity.

Whether you feel the bread tribute is crummy or not, The Bread Company Condos is currently in registration with pre-launch prices available for most layouts.

**DEVELOPMENTS FEATURED IN THIS ARTICLE**



**The Bread Company Condos**  
 Toronto, Ontario  
 Sales from \$615,900

**More Like This**



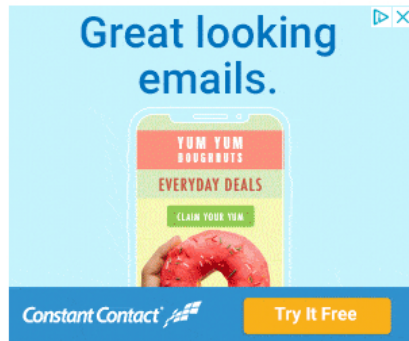
8 popular Toronto malls and stores that are becoming condos

Warren Buffett's Berkshire Hathaway HomeServices enters Toronto with landmark Blue Elephant deal

Newly proposed Mount Dennis condo tower boasts enviable transit access


Federal government proposal will boost Toronto house hunters' buying power


Westblock and Lakeshore Condos bringing new retailers to Toronto's CityPlace



### Facebook Chatter

0 Comments Sort by Oldest ▾



 Facebook Comments Plugin



**3** Canderel breaks ground at 900 St.Clair West and unveils a sneak peek of future community mural

**4** 6 popular houseplants you can grow in water

**5** Homebuyer demand is spiking in Toronto but supply isn't keeping up